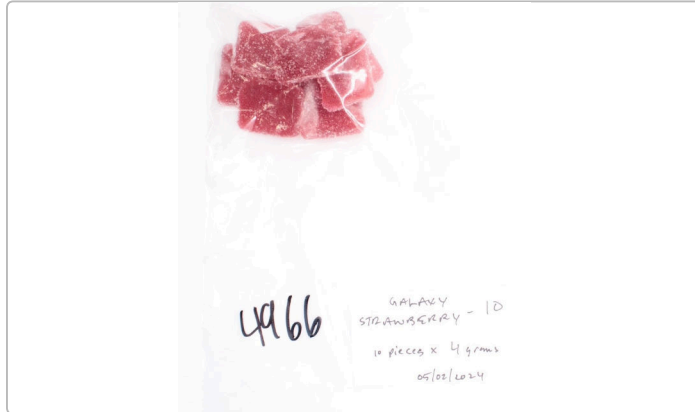


# Galaxy - Strawberry 10

<b>Sample ID:</b> 2405PML0353.1510	<b>Produced:</b>	<b>Distributor:</b>	<b>Producer:</b>
Strain: Strawberry	Collected: 05/02/2024	<b>DGU LLC</b>	<b>NS-S3 Consulting</b>
Matrix: Ingestible	Received: 05/03/2024	Lic. # CDPH-10004783	
Type: Soft Chew	Completed: 05/13/2024	9350 Trade Pl Ste A	
Sample Size: ; Batch: 1 units	Batch#: Strawberry 10	San Diego, CA 92126	



## Summary

Test	Date Tested	Result
Batch		Pass
Cannabinoids	05/13/2024	Pass
Residual Solvents	05/08/2024	Pass
Pesticides	05/10/2024	Pass

Foreign Matter Method: PML-DSLIR-600  
 Foreign Matter Instrument: DSLR Camera/Image Analysis  
 Limit for Foreign Matter: 1/4 of the total sample area covered by sand, soil, cinders, or dirt; 1/4 of the total sample area covered by mold; 1 insect fragment, 1 hair, or 1 count mammalian excreta per 3.0 grams; or 1/4 of the total sample area covered by an imbedded foreign material

## Cannabinoids

Pass

<b>10.138 mg/serving</b> Total THC	<b>ND</b> Total CBD	<b>10.846 mg/serving</b> Total Cannabinoids
---------------------------------------	------------------------	--

Analyte	LOD	LOQ	Result	Result	Result	Result
	mg/g	mg/g	%	mg/g	mg/serving	mg/container
THCa	0.012	0.040	0.0192	0.192	0.768	7.680
Δ9-THC	0.012	0.040	0.2366	2.366	9.464	94.640
Δ8-THC	0.012	0.040	ND	ND	ND	ND
THCV	0.012	0.040	0.0177	0.177	0.708	7.080
THCp	0.020	0.040	ND	ND	ND	ND
CBDa	0.012	0.040	ND	ND	ND	ND
CBD	0.012	0.040	ND	ND	ND	ND
CBDVa	0.012	0.040	ND	ND	ND	ND
CBDV	0.012	0.040	ND	ND	ND	ND
CBN	0.012	0.040	ND	ND	ND	ND
CBGa	0.012	0.040	<LOQ	<LOQ	<LOQ	<LOQ
CBG	0.012	0.040	<LOQ	<LOQ	<LOQ	<LOQ
CBC	0.020	0.040	ND	ND	ND	ND
CBL	0.012	0.040	ND	ND	ND	ND
<b>Total THC</b>			<b>0.2534</b>	<b>2.5344</b>	<b>10.1375</b>	<b>101.3754</b>
<b>Total CBD</b>			<b>ND</b>	<b>ND</b>	<b>ND</b>	<b>ND</b>
<b>Total</b>			<b>0.2711</b>	<b>2.7114</b>	<b>10.8455</b>	<b>108.4554</b>

Total THC = Δ9-THC + Δ8-THC + (0.877 × THCa)  
 Total CBD = CBD + (0.877 × CBDa)  
 Total Cannabinoids = Σ (Neutral Cannabinoids) + [0.877 × Σ (Acidic Cannabinoids)]

Date Tested: 05/13/2024  
 Method: PML-HPLC-100  
 Instrument: UHPLC

10.0 servings per container.

Limit for Edible products:  
 10 milligrams THC per serving  
 100 milligrams THC per package

Limit for Topicals and Concentrates:  
 1,000 milligrams THC per package



*Han Suk Kim*  
 Han Suk Kim, Ph.D  
 Laboratory Director  
 05/13/2024

Confident LIMS  
 All Rights Reserved  
 coa.support@confidentlims.com  
 (866) 506-5866  
 www.confidentlims.com

This product has been tested by Purity Medical Laboratories using valid testing methodologies and a quality system as required by state law. All LQC samples were performed and met the prescribed acceptance criteria in 4 CCR 15730, pursuant to 4 CCR section 15726(e)(13). Values reported relate only to the sample products as received and tested. Purity Medical Laboratories makes no claims as to the efficacy, safety, or other risks associated with any detected or non-detected levels of any compounds reported herein. This Certificate shall not be reproduced except in full, without the written approval of Purity Medical Laboratories. The following abbreviations for Limit of Detection (LOD), Limit of Quantitation (LOQ), and Not Detected (ND) are applied. Uncertainty measurement calculations are not factored into the final results and do not contribute in the decision of a pass/fail for the specified analytes.

# Galaxy - Strawberry 10

<b>Sample ID:</b> 2405PML0353.1510	<b>Produced:</b>	<b>Distributor</b>	<b>Producer</b>
Strain: Strawberry	Collected: 05/02/2024	<b>DGU LLC</b>	<b>NS-S3 Consulting</b>
Matrix: Ingestible	Received: 05/03/2024	Lic. # CDPH-10004783	
Type: Soft Chew	Completed: 05/13/2024	9350 Trade Pl Ste A	
Sample Size: ; Batch: 1 units	Batch#: Strawberry 10	San Diego, CA 92126	

## Category I Pesticides

Pass

Analyte	LOD	LOQ	Limit	Result	Status	Analyte	LOD	LOQ	Limit	Result	Status
	µg/g	µg/g	µg/g	µg/g			µg/g	µg/g	µg/g	µg/g	
Aldicarb	0.0142	0.0431	0.0142	ND	Pass	Fenoxycarb	0.0162	0.049	0.0162	ND	Pass
Carbofuran	0.0177	0.0535	0.0177	ND	Pass	Fipronil	0.0041	0.0125	0.0041	ND	Pass
Chlordane	0.0206	0.0625	0.0206	ND	Pass	Imazalil	0.0216	0.0654	0.0216	ND	Pass
Chlorfenapyr	0.0206	0.0625	0.0206	ND	Pass	Methiocarb	0.0092	0.0278	0.0092	ND	Pass
Chlorpyrifos	0.0103	0.0313	0.0103	ND	Pass	Mevinphos	0.0303	0.0918	0.0303	ND	Pass
Coumaphos	0.0134	0.0407	0.0134	ND	Pass	Paclobutrazol	0.0167	0.0505	0.0167	ND	Pass
Daminozide	0.0107	0.0323	0.0107	ND	Pass	Parathion Methyl	0.0272	0.0825	0.0272	ND	Pass
Dichlorvos	0.0222	0.0672	0.0222	ND	Pass	Propoxur	0.0082	0.0249	0.0082	ND	Pass
Dimethoate	0.0048	0.02	0.0048	ND	Pass	Spiroxamine	0.0106	0.0322	0.0106	ND	Pass
Ethoprophos	0.0066	0.0201	0.0066	ND	Pass	Thiacloprid	0.0067	0.0203	0.0067	ND	Pass
Etofenprox	0.0048	0.02	0.0048	ND	Pass						

## Category II Pesticides

Pass

Analyte	LOD	LOQ	Limit	Result	Status	Analyte	LOD	LOQ	Limit	Result	Status
	µg/g	µg/g	µg/g	µg/g			µg/g	µg/g	µg/g	µg/g	
Abamectin	0.0106	0.0321	0.3	ND	Pass	Kresoxim Methyl	0.0148	0.0447	1	ND	Pass
Acephate	0.0066	0.02	5	ND	Pass	Malathion	0.0249	0.0756	5	ND	Pass
Acequinocyl	0.0064	0.02	4	ND	Pass	Metalaxyl	0.0039	0.02	15	ND	Pass
Acetamiprid	0.0063	0.02	5	ND	Pass	Methomyl	0.011	0.0335	0.1	ND	Pass
Azoxystrobin	0.007	0.0214	40	ND	Pass	Myclobutanil	0.0164	0.0498	9	ND	Pass
Bifenazate	0.0079	0.0238	5	ND	Pass	Naled	0.0097	0.0294	0.5	ND	Pass
Bifenthrin	0.0063	0.02	0.5	ND	Pass	Oxamyl	0.0135	0.0409	0.2	ND	Pass
Boscalid	0.0163	0.0495	10	ND	Pass	Pentachloronitrobenzene	0.0041	0.0125	0.2	ND	Pass
Captan	0.2063	0.625	5	ND	Pass	Permethrin	0.0069	0.021	20	ND	Pass
Carbaryl	0.014	0.0423	0.5	ND	Pass	Phosmet	0.0099	0.0301	0.2	ND	Pass
Chlorantraniliprole	0.0104	0.0314	40	ND	Pass	Piperonyl Butoxide	0.0291	0.0883	8	ND	Pass
Clofentazine	0.0131	0.0396	0.5	ND	Pass	Prallethrin	0.0235	0.0712	0.4	ND	Pass
Cyfluthrin	0.2063	0.625	1	ND	Pass	Propiconazole	0.0268	0.0812	20	ND	Pass
Cypermethrin	0.0206	0.0625	1	ND	Pass	Pyrethrins	0.0156	0.0473	1	ND	Pass
Diazinon	0.0075	0.0228	0.2	ND	Pass	Pyridaben	0.0043	0.02	3	ND	Pass
Dimethomorph	0.0104	0.0316	20	ND	Pass	Spinetoram	0.0054	0.0165	3	ND	Pass
Etoxazole	0.0069	0.0209	1.5	ND	Pass	Spinosad	0.005	0.0152	3	ND	Pass
Fenhexamid	0.0164	0.0498	10	ND	Pass	Spiromesifen	0.0161	0.0487	12	ND	Pass
Fenpyroximate	0.0056	0.02	2	ND	Pass	Spirotetramat	0.0176	0.0532	13	ND	Pass
Flonicamid	0.0159	0.0482	2	ND	Pass	Tebuconazole	0.0202	0.0613	2	ND	Pass
Fludioxonil	0.0127	0.0386	30	ND	Pass	Thiamethoxam	0.0077	0.0234	4.5	ND	Pass
Hexythiazox	0.0088	0.0266	2	ND	Pass	Trifloxystrobin	0.0112	0.034	30	ND	Pass
Imidacloprid	0.0097	0.0295	3	ND	Pass						

Date Tested: 05/10/2024  
 Method: PML-LCGCTQ-300  
 Instruments: LC-MS/MS, GC-TQ



*Han Suk Kim*  
 Han Suk Kim, Ph.D  
 Laboratory Director  
 05/13/2024

Confident LIMS  
 All Rights Reserved  
 coa.support@confidentlims.com  
 (866) 506-5866  
 www.confidentlims.com

This product has been tested by Purity Medical Laboratories using valid testing methodologies and a quality system as required by state law. All LQC samples were performed and met the prescribed acceptance criteria in 4 CCR 15730, pursuant to 4 CCR section 15726(e)(13). Values reported relate only to the sample products as received and tested. Purity Medical Laboratories makes no claims as to the efficacy, safety, or other risks associated with any detected or non-detected levels of any compounds reported herein. This Certificate shall not be reproduced except in full, without the written approval of Purity Medical Laboratories. The following abbreviations for Limit of Detection (LOD), Limit of Quantitation (LOQ), and Not Detected (ND) are applied. Uncertainty measurement calculations are not factored into the final results and do not contribute in the decision of a pass/fail for the specified analytes.

## Galaxy - Strawberry 10

<b>Sample ID:</b> 2405PML0353.1510	<b>Produced:</b>	<b>Distributor:</b>	<b>Producer:</b>
Strain: Strawberry	Collected: 05/02/2024	<b>DGU LLC</b>	<b>NS-S3 Consulting</b>
Matrix: Ingestible	Received: 05/03/2024	Lic. # CDPH-10004783	
Type: Soft Chew	Completed: 05/13/2024	9350 Trade Pl Ste A	
Sample Size: ; Batch: 1 units	Batch#: Strawberry 10	San Diego, CA 92126	

### Category I Residual Solvents

Pass

Analyte	LOD	LOQ	Limit	Result	Status
	µg/g	µg/g	µg/g	µg/g	
1,2-Dichloroethane	0.17	0.58	1.00	ND	Pass
Benzene	0.10	0.34	1.00	ND	Pass
Chloroform	0.16	0.55	1.00	ND	Pass
Ethylene Oxide	0.23	0.77	1.00	ND	Pass
Methylene Chloride	0.19	0.62	1.00	ND	Pass
Trichloroethylene	0.15	0.49	1.00	ND	Pass

### Category II Residual Solvents

Pass

Analyte	LOD	LOQ	Limit	Result	Status
	µg/g	µg/g	µg/g	µg/g	
Acetone	47.50	158.44	5000.00	ND	Pass
Acetonitrile	61.33	204.58	410.00	ND	Pass
Butane	91.27	304.43	5000.00	ND	Pass
Ethanol	41.33	137.87	5000.00	<LOQ	Pass
Ethyl Acetate	37.90	126.42	5000.00	ND	Pass
Ethyl Ether	49.53	165.21	5000.00	ND	Pass
Heptane	43.84	146.25	5000.00	ND	Pass
n-Hexane	47.05	156.94	290.00	ND	Pass
Isopropanol	46.59	155.39	5000.00	ND	Pass
Methanol	58.19	194.11	3000.00	ND	Pass
Pentane	57.82	192.87	5000.00	ND	Pass
Propane	69.16	230.68	5000.00	ND	Pass
Toluene	26.92	89.80	890.00	ND	Pass
Xylenes	56.10	187.12	2170.00	ND	Pass

Date Tested: 05/08/2024  
 Method: PML-GCMSD-300  
 Instrument: GC-MSD



*Han Suk Kim*  
 Han Suk Kim, Ph.D  
 Laboratory Director  
 05/13/2024

Confident LIMS  
 All Rights Reserved  
 coa.support@confidentlims.com  
 (866) 506-5866  
 www.confidentlims.com

This product has been tested by Purity Medical Laboratories using valid testing methodologies and a quality system as required by state law. All LQC samples were performed and met the prescribed acceptance criteria in 4 CCR 15730, pursuant to 4 CCR section 15726(e)(13). Values reported relate only to the sample products as received and tested. Purity Medical Laboratories makes no claims as to the efficacy, safety, or other risks associated with any detected or non-detected levels of any compounds reported herein. This Certificate shall not be reproduced except in full, without the written approval of Purity Medical Laboratories. The following abbreviations for Limit of Detection (LOD), Limit of Quantitation (LOQ), and Not Detected (ND) are applied. Uncertainty measurement calculations are not factored into the final results and do not contribute in the decision of a pass/fail for the specified analytes.